



TK International  
020 7794 8700  
www.t-k.co.uk

Residential Sales  
Residential Lettings  
Property Management

Sales Office:  
9 Heath Street  
Hampstead  
London NW3 6TP  
E: sales@t-k.co.uk

Lettings Office:  
16-18 Heath Street  
Hampstead  
London NW3 6TE  
E: lettings@t-k.co.uk

@ tk.international  
in TK International  
f TK International

1998 > 2023 Celebrating 25 years of trusted service.

TK25



## North End Road Golders Green NW11

An attractive three bedroom mid-terraced house, situated within a short walk of the wide choice of shops, restaurants, cafes and transport facilities of Golders Green.

The house is in need of modernising and currently comprises two reception rooms and a kitchen/breakfast room on the ground floor and three bedrooms and bathroom on the first floor. There is also potential to extend into the attic, subject to planning permission.

There is a private garden to the rear and the house is also located within walking distance to the vast acres of Hampstead Heath and Golders Hill Park.

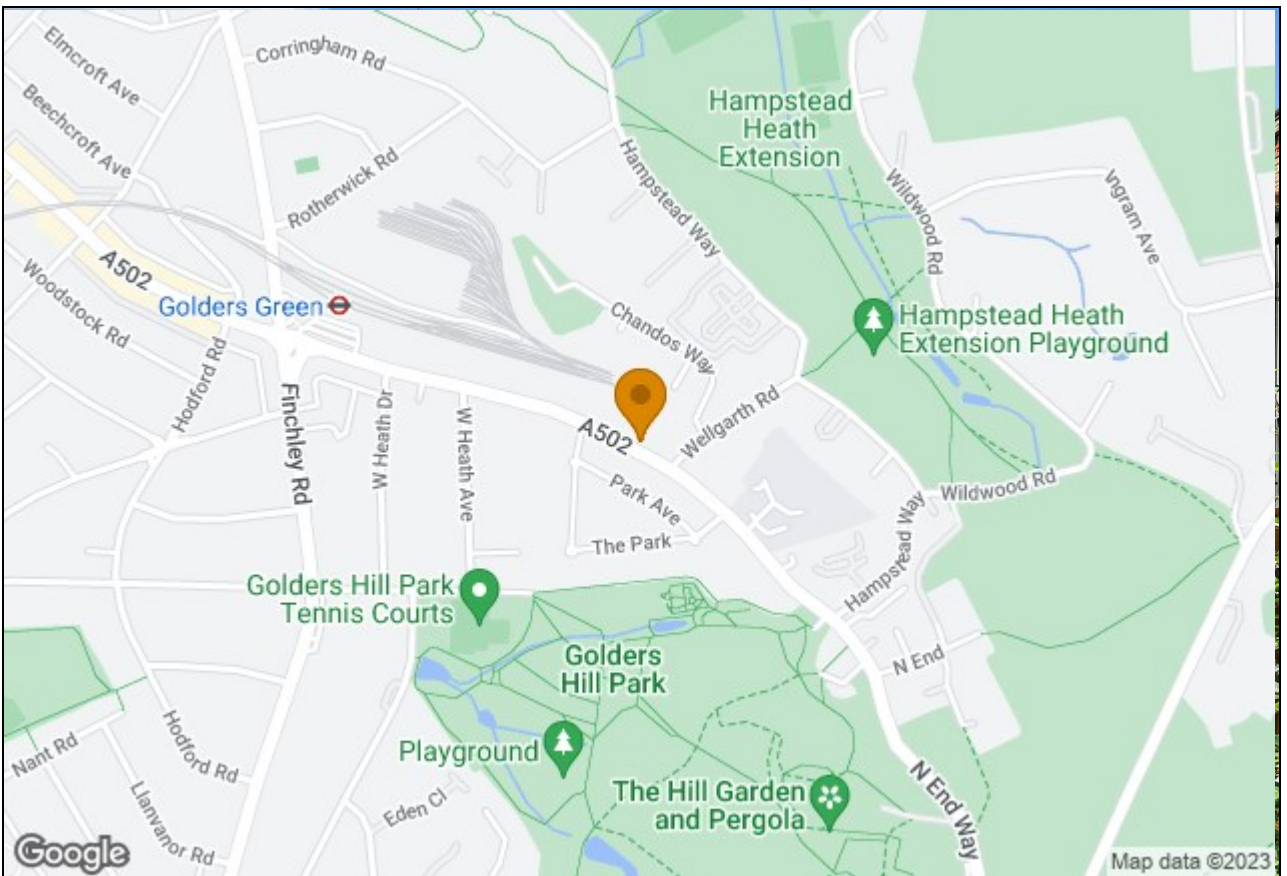
**£900,000**

**Freehold**





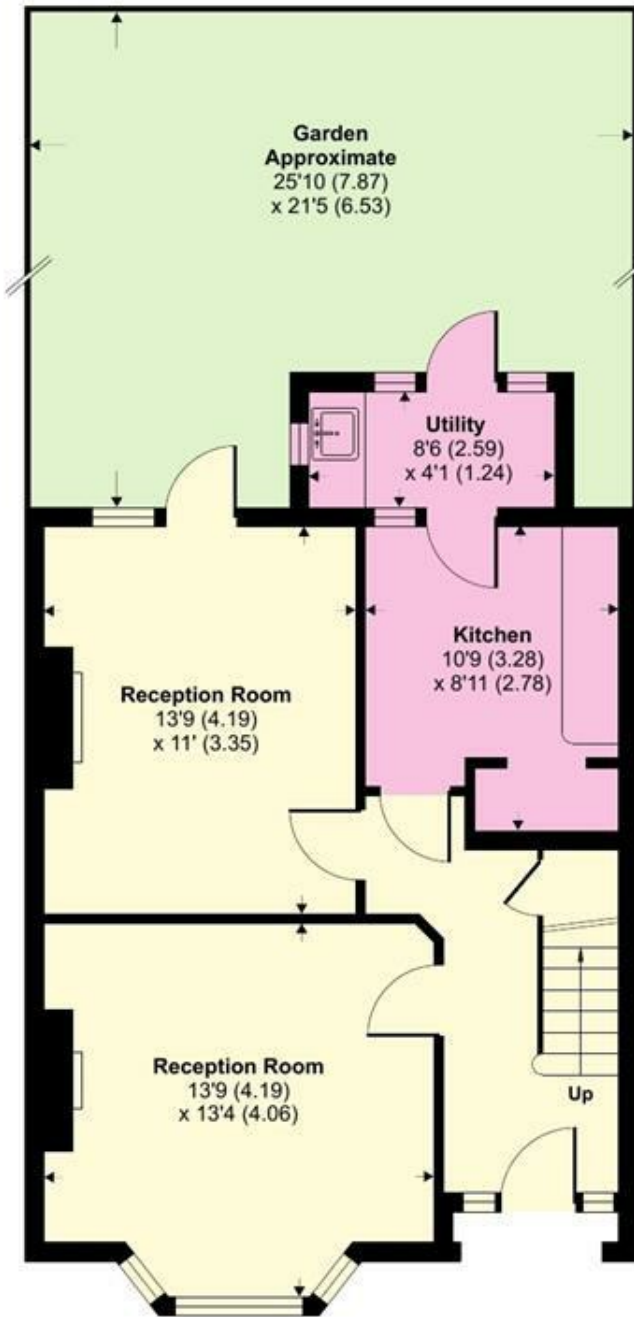




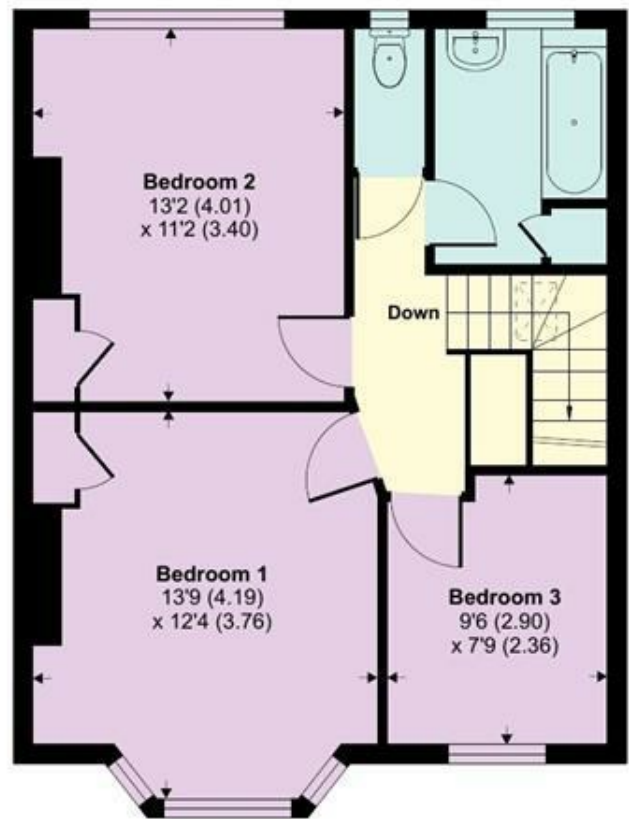
# North End Road, London, NW11

Approximate Area = 1078 sq ft / 100.1 sq m

For identification only - Not to scale



GROUND FLOOR



FIRST FLOOR

